

RC01C Series Automotive R134a Service Coupling

Parker's RC01C automotive service coupling provides easy evacuating and charging of R-134a mobile air conditioning systems.

Features and Benefits

- Safety feature prevents coupling from flowing unless connected to service port.
- Brass coupling, with or without plating, provides corrosion resistance.
- Red anodized knob on the high side and blue anodized knob on the low side, along with distinct sizes, assist in preventing cross-contamination between sections of the system.

Specifications

SAEJ639

Temp. Rating: -40°F to +250°F
-40°C to 121°C

Maximum Operating

Pressure: 500 psig

Compatible Refrigerants and Lubricants

R-134a and POE oil

Base Product Part Number

- **RC01C-002**
Lowside field service coupling
- **RC01C-003**
Highside field service coupling

*See the following page for brass and plated part numbers and configurations.



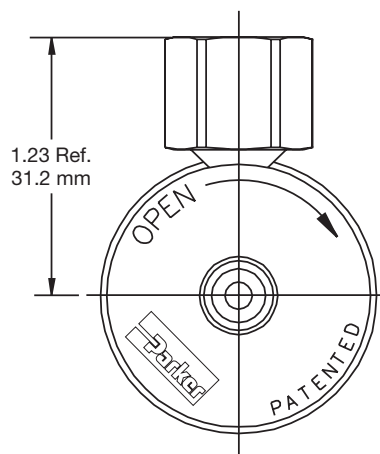
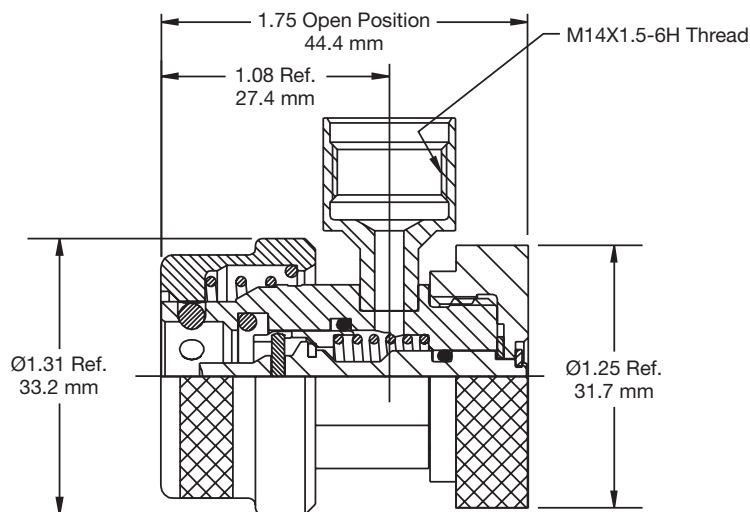
Applications

- Evacuating and charging of R-134a air conditioning systems

Dimensions

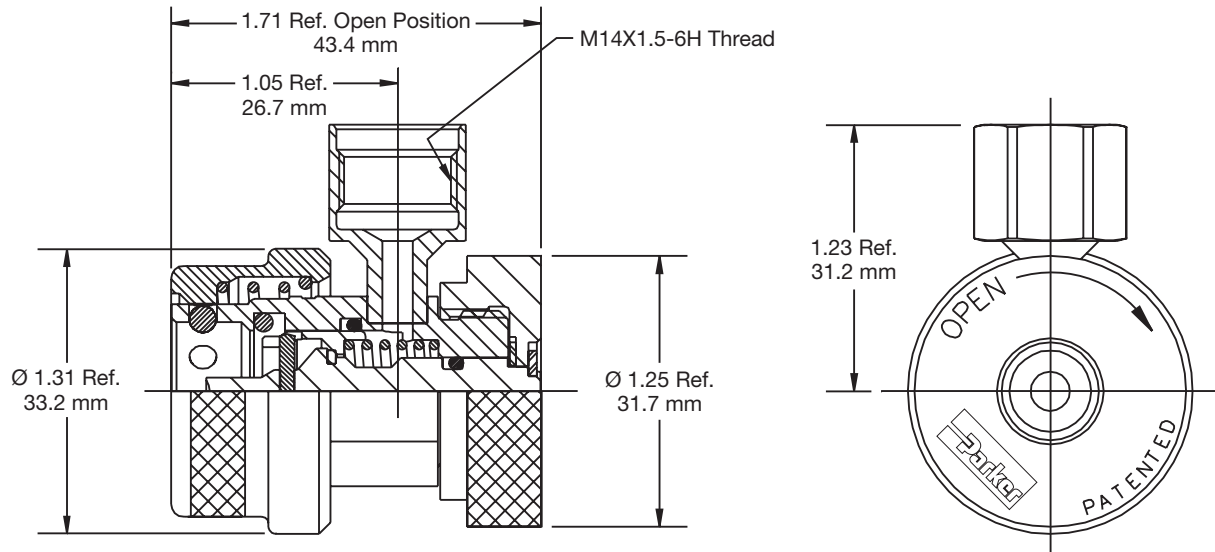
RC01C-002 Service Coupling Assembly

Low Side, R134a



Dimensions

RC01C-003 Service Coupling Assembly High Side, R134a



Finish	Side Port	System Side	Part Number
Plated	14 mm Female	Low Side	RC01C-002
Plated	14 mm Female	High Side	RC01C-003
Plated	5/8" - 18 Male	Low Side	RC01C-006
Plated	5/8" - 18 Male	High Side	RC01C-007
Plated	7/16" - 20 Male	Low Side	RC01C-011
Plated	7/16" - 20 Male	High Side	RC01C-012

Finish	Side Port	System Side	Part Number
Brass	14 mm Female	Low Side	RC01C-021
Brass	14 mm Female	High Side	RC01C-022
Brass	7/16" - 20 Male	Low Side	RC01C-023
Brass	7/16" - 20 Male	High Side	RC01C-024

Repair Kits

- Nose Seal Repair Kit, Part Number RA0122-001
- RC01B001-08-01 Process Coupling, Part Number RA0203-001